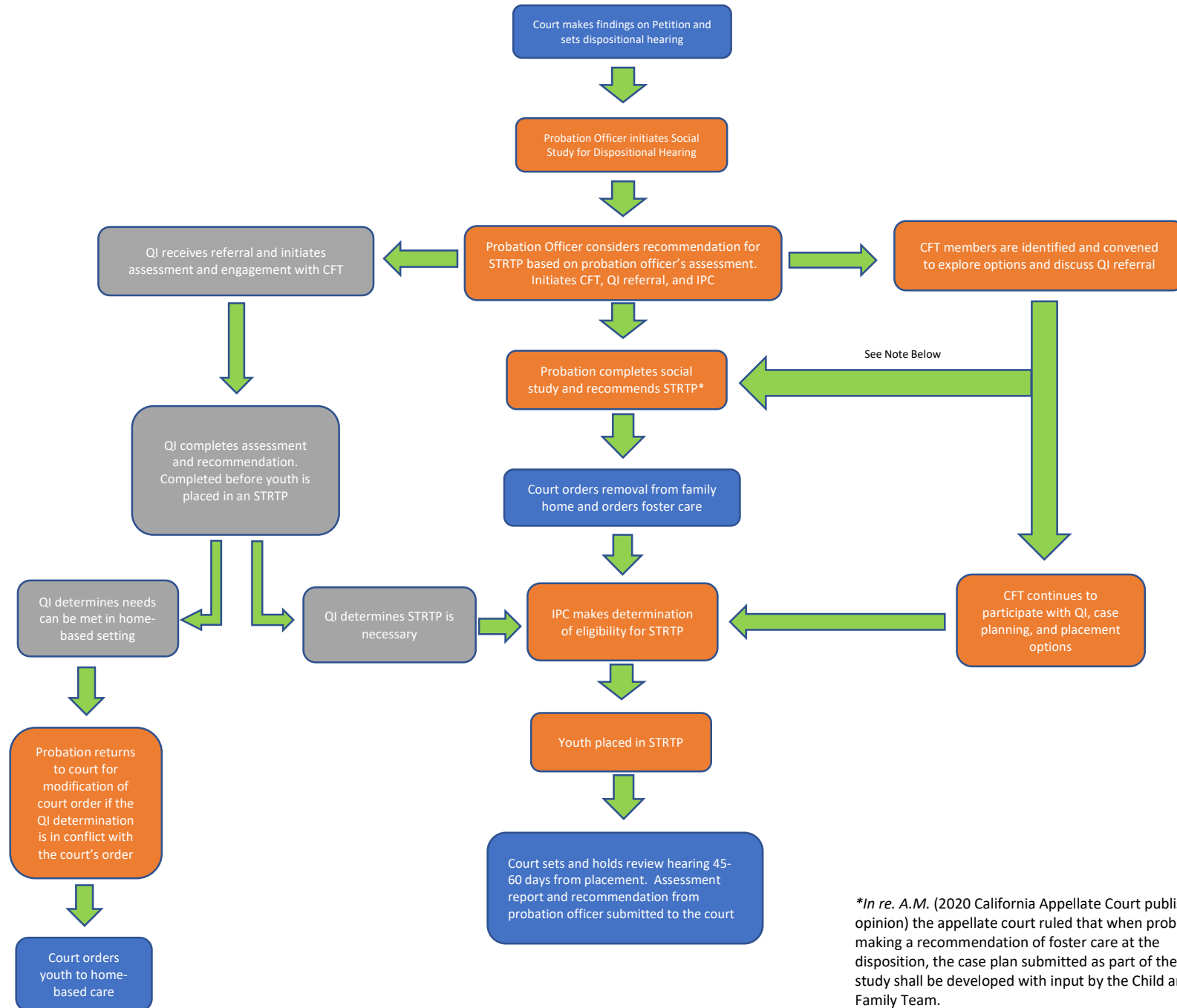


## QI Referral Made When Probation Department Considers STRTP Recommendation QI Assessment is Completed Before Placement in STRTP

Please Note: This process map is for counties to use as a road map but to tailor it to their county policies and processes while ensuring FFPSA requirements are being met.



*\*In re. A.M.* (2020 California Appellate Court published opinion) the appellate court ruled that when probation is making a recommendation of foster care at the disposition, the case plan submitted as part of the social study shall be developed with input by the Child and Family Team.