

Juvenile Justice Facilities in the 21st Century -
Shasta County Probation's Juvenile
Rehabilitation Facility



Juvenile Justice Facilities in the 21st Century -
Shasta County Probation's Juvenile
Rehabilitation Facility



Juvenile Justice Facilities in the 21st Century -
Shasta County Probation's Juvenile
Rehabilitation Facility



Juvenile Justice Facilities in the 21st Century -
Shasta County Probation's Juvenile
Rehabilitation Facility



Juvenile Justice Facilities in the 21st Century -
Shasta County Probation's Juvenile
Rehabilitation Facility



Juvenile Justice Facilities in the 21st Century -
Shasta County Probation's Juvenile
Rehabilitation Facility



Juvenile Justice Facilities in the 21st Century -
Shasta County Probation's Juvenile
Rehabilitation Facility



Juvenile Justice Facilities in the 21st Century -
Shasta County Probation's Juvenile
Rehabilitation Facility



Juvenile Justice Facilities in the 21st Century -
Shasta County Probation's Juvenile
Rehabilitation Facility



Juvenile Justice Facilities in the 21st Century -
Shasta County Probation's Juvenile
Rehabilitation Facility



Juvenile Justice Facilities in the 21st Century -
Shasta County Probation's Juvenile
Rehabilitation Facility



Juvenile Justice Facilities in the 21st Century -
Shasta County Probation's Juvenile
Rehabilitation Facility



Juvenile Justice Facilities in the 21st Century -
Shasta County Probation's Juvenile
Rehabilitation Facility



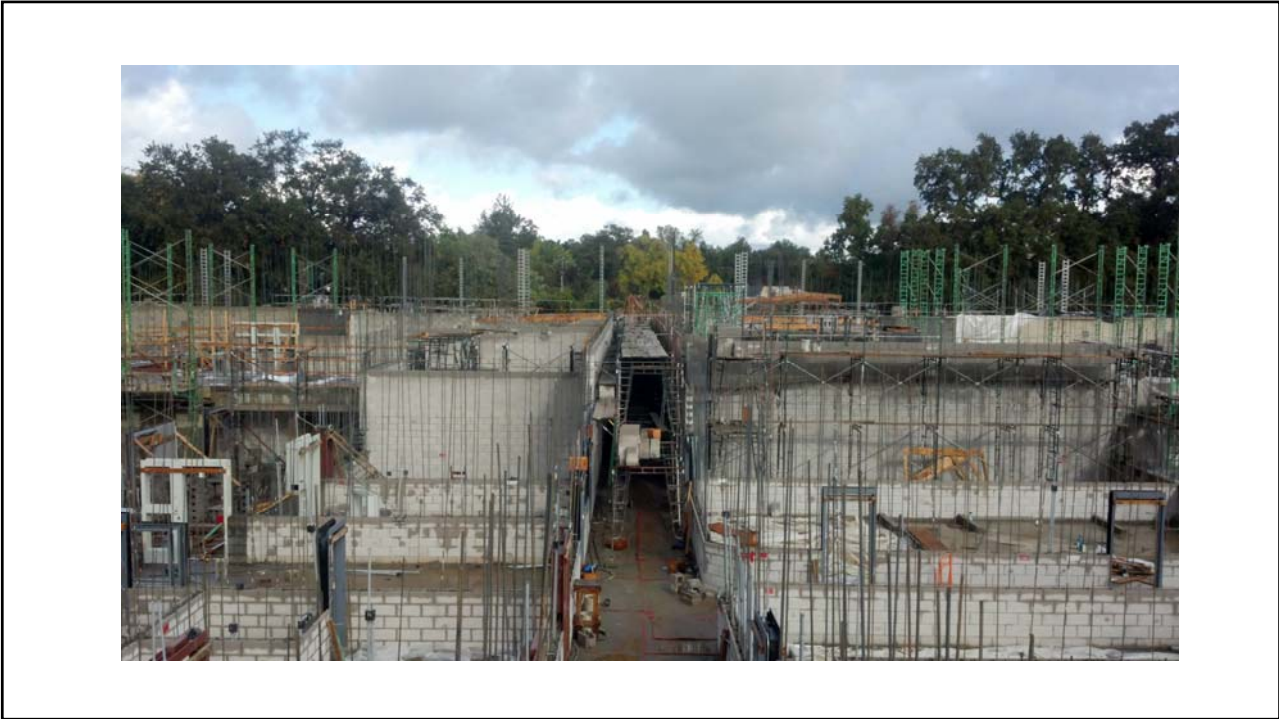
Juvenile Justice Facilities in the 21st Century -
Shasta County Probation's Juvenile
Rehabilitation Facility



Juvenile Justice Facilities in the 21st Century -
Shasta County Probation's Juvenile
Rehabilitation Facility



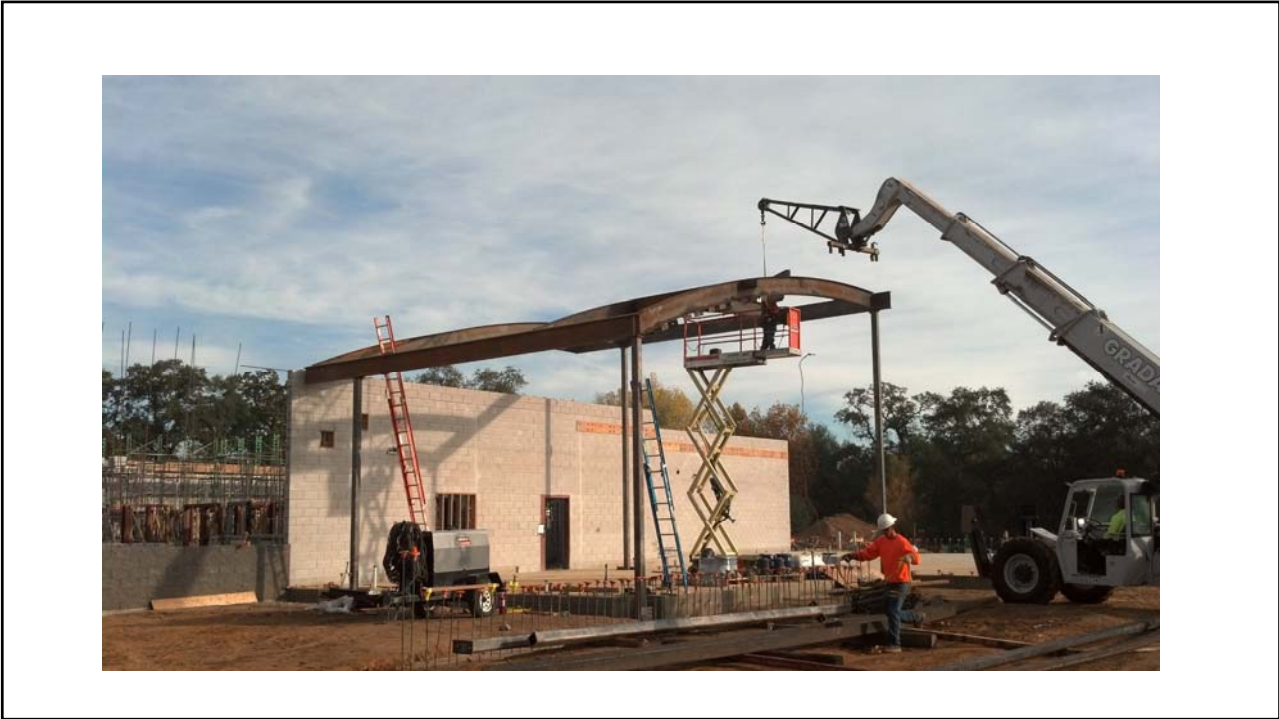
Juvenile Justice Facilities in the 21st Century -
Shasta County Probation's Juvenile
Rehabilitation Facility



Juvenile Justice Facilities in the 21st Century -
Shasta County Probation's Juvenile
Rehabilitation Facility



Juvenile Justice Facilities in the 21st Century -
Shasta County Probation's Juvenile
Rehabilitation Facility



Juvenile Justice Facilities in the 21st Century -
Shasta County Probation's Juvenile
Rehabilitation Facility



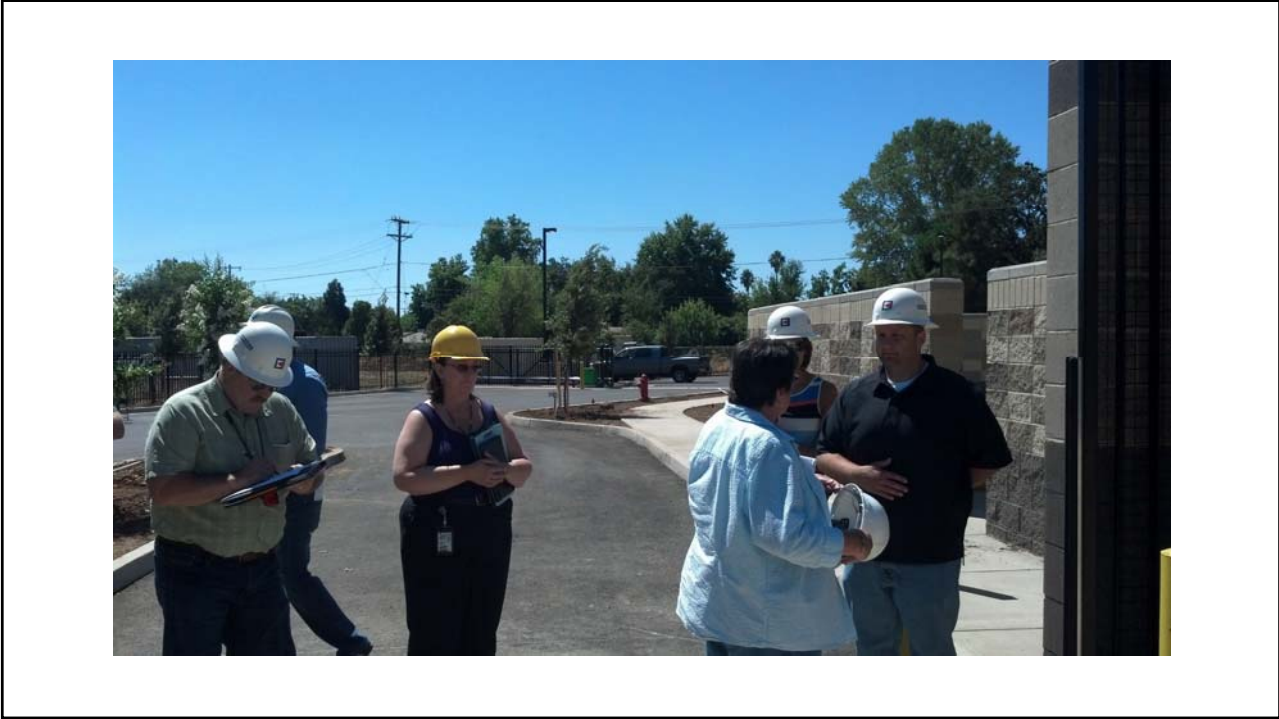
Juvenile Justice Facilities in the 21st Century -
Shasta County Probation's Juvenile
Rehabilitation Facility



Juvenile Justice Facilities in the 21st Century -
Shasta County Probation's Juvenile
Rehabilitation Facility



Juvenile Justice Facilities in the 21st Century -
Shasta County Probation's Juvenile
Rehabilitation Facility



Juvenile Justice Facilities in the 21st Century -
Shasta County Probation's Juvenile
Rehabilitation Facility



Juvenile Justice Facilities in the 21st Century -
Shasta County Probation's Juvenile
Rehabilitation Facility



Juvenile Justice Facilities in the 21st Century -
Shasta County Probation's Juvenile
Rehabilitation Facility



Juvenile Justice Facilities in the 21st Century -
Shasta County Probation's Juvenile
Rehabilitation Facility



Juvenile Justice Facilities in the 21st Century -
Shasta County Probation's Juvenile
Rehabilitation Facility



Juvenile Justice Facilities in the 21st Century -
Shasta County Probation's Juvenile
Rehabilitation Facility



Juvenile Justice Facilities in the 21st Century -
Shasta County Probation's Juvenile
Rehabilitation Facility



Juvenile Justice Facilities in the 21st Century -
Shasta County Probation's Juvenile
Rehabilitation Facility



Juvenile Justice Facilities in the 21st Century -
Shasta County Probation's Juvenile
Rehabilitation Facility



Juvenile Justice Facilities in the 21st Century -
Shasta County Probation's Juvenile
Rehabilitation Facility



Juvenile Justice Facilities in the 21st Century -
Shasta County Probation's Juvenile
Rehabilitation Facility





The Shasta County Juvenile Rehabilitation Facility is dedicated to providing a safe and secure environment for detained youth, where professional staff hold residents accountable while encouraging them to embrace positive community values, accept responsibility and cultivate healthy relationships. We accomplish this mission by ensuring staff serve as role models and project an appearance, attitude and behavior which creates an atmosphere conducive to positive change, and by working closely with our community partners to deliver research driven programs targeting the individual needs of our population.