



Juvenile Justice Process Map

California's juvenile justice system has a level of complexity that can be difficult to grasp and difficult to communicate to those who are unfamiliar with the system. There are multiple key stakeholders within the system beyond Probation.

This includes not only the Court, but also: frontline law enforcement, District Attorney, and defense counsel. As such, this process map provides a high-level overview of the entirety of the juvenile justice system and highlights key decision points along with which juvenile justice partner holds that decision making ability. Additionally, this map documents the multiple opportunities for youth to exit the juvenile justice system in a positive fashion.

As an industry, Probation in California has changed significantly over the last couple of decades and will continue to change as legislative mandates modify the juvenile justice system. Because California has a decentralized juvenile justice system, it is acknowledged there could be local variances to what is illustrated on the process map. For this reason, as well as for educational purposes, links to specific code sections are provided at each key step of the map.

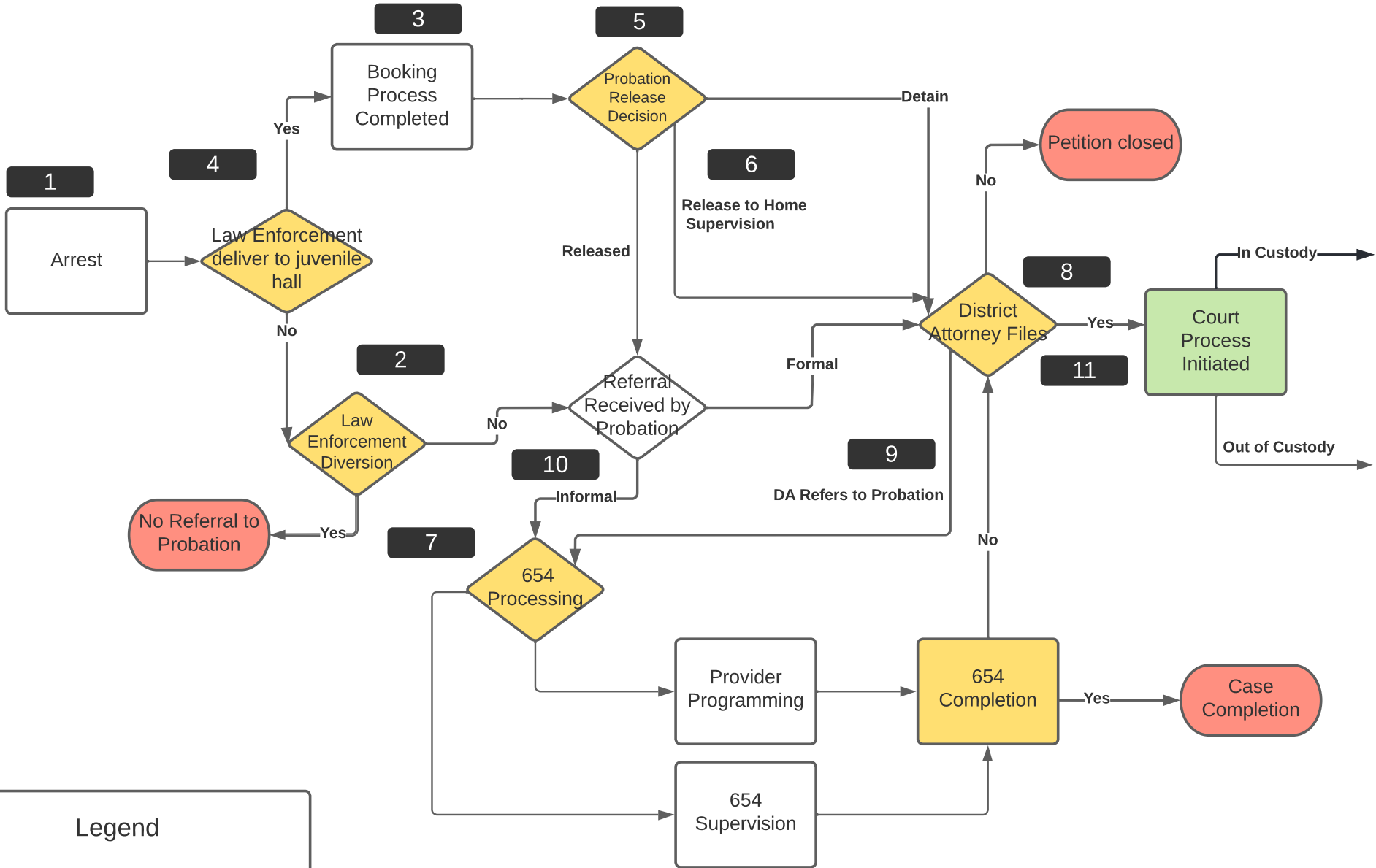
As a tool, we believe there are multiple uses for this process map. Opportunities include education and training of probation department employees; communicating with public and private stakeholders, policy makers, and the community; enhancing the ability to analyze and improve local systems; and providing a clearer view of the implications of legislative efforts.

Created by Mark Hake and
Kevin O'Connell

Jun 9, 2022 5:46 PM

Contact Kevin@oconnellresearch.com with questions or
comments

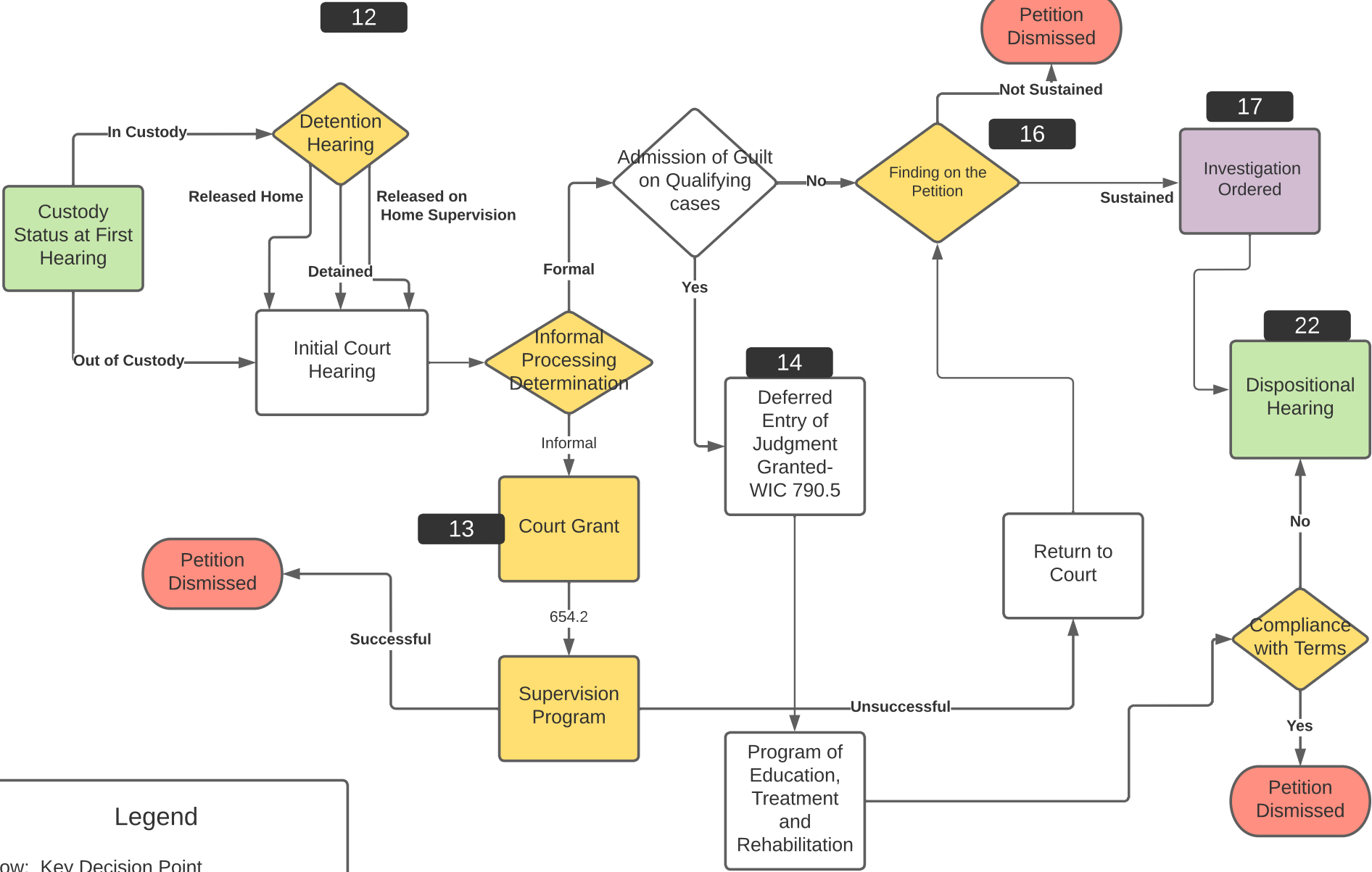
Booking to Court Process



Legend

- Yellow: Key Decision Point
- Green: Process Continues to another page
- Red: Process Stops
- Purple: Link to Deeper Process Map
- Black: Link to Statute

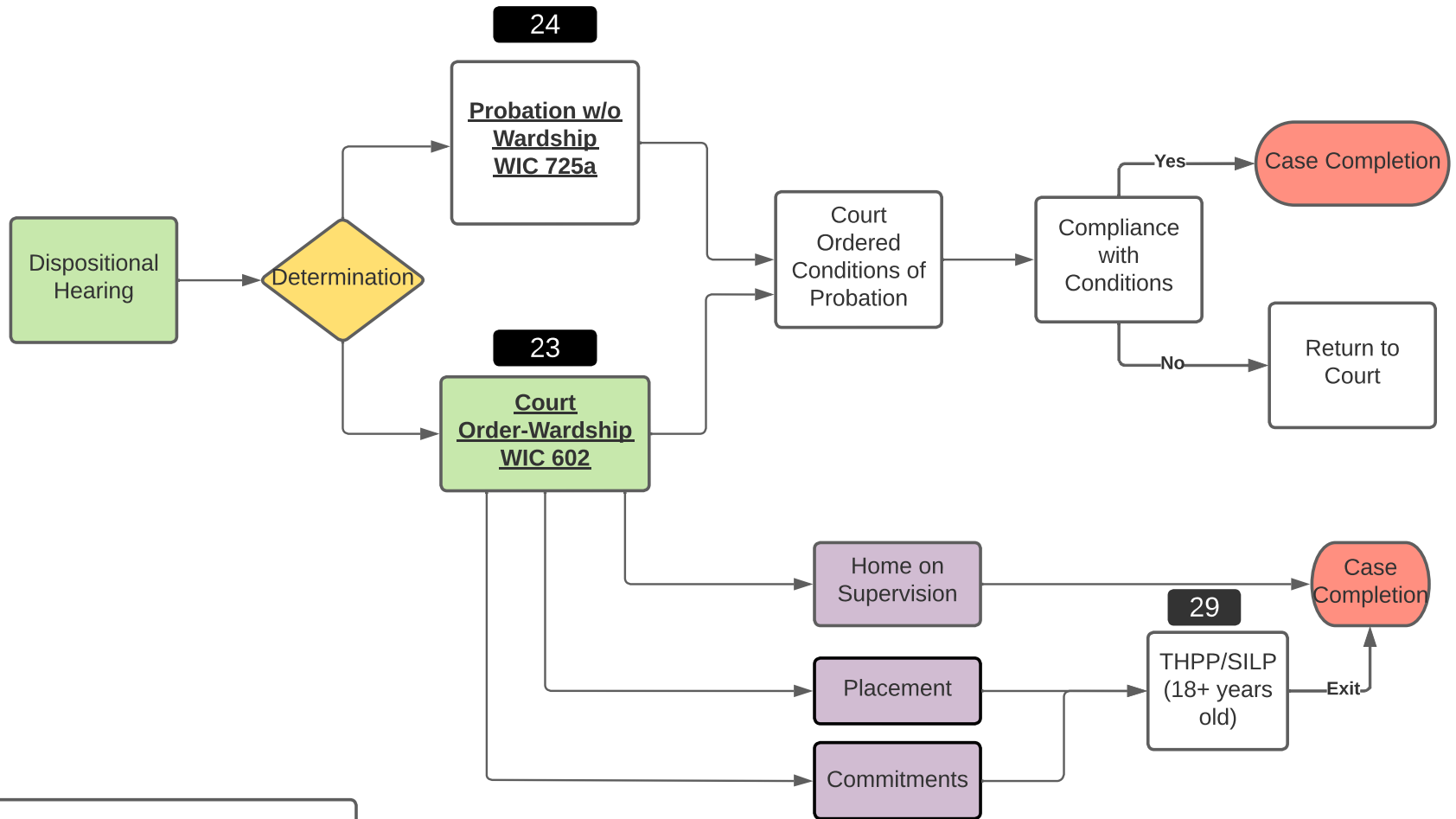
Court Process to Dispositional Hearing



Legend

- Yellow: Key Decision Point
- Green: Process Continues to another page
- Red: Process Stops
- Purple: Link to Deeper Process Map
- Black: Link to Statute

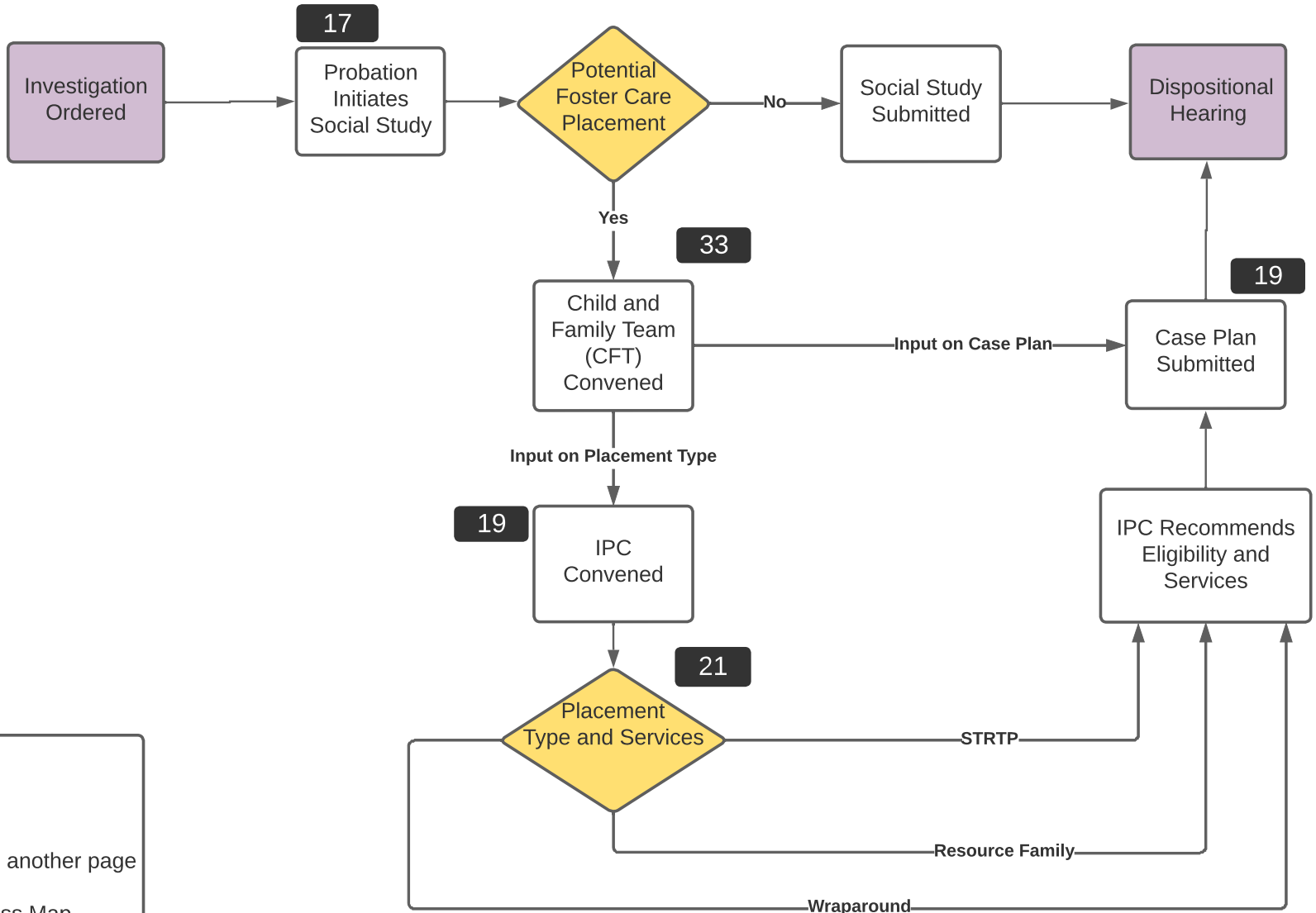
Dispositional Hearing to Supervision



Legend

Yellow: Key Decision Point
 Green: Process Continues to another page
 Red: Process Stops
 Purple: Link to Deeper Process Map
 Black: Link to Statute

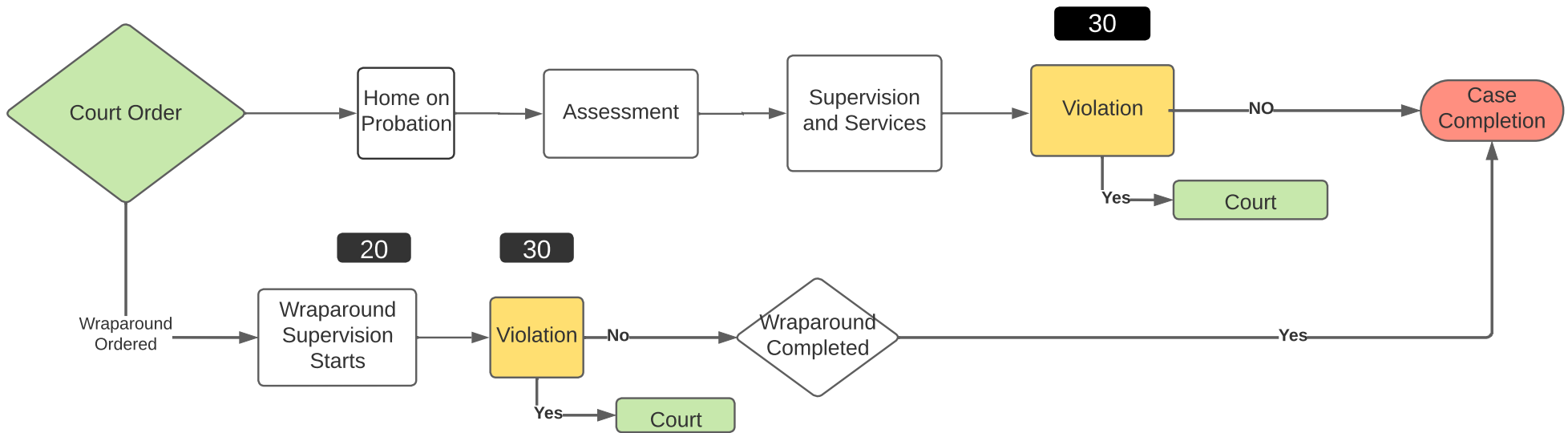
Investigation and Predisposition Flow



Legend

- Yellow: Key Decision Point
- Green: Process Continues to another page
- Red: Process Stops
- Purple: Link to Deeper Process Map
- Black: Link to Statute

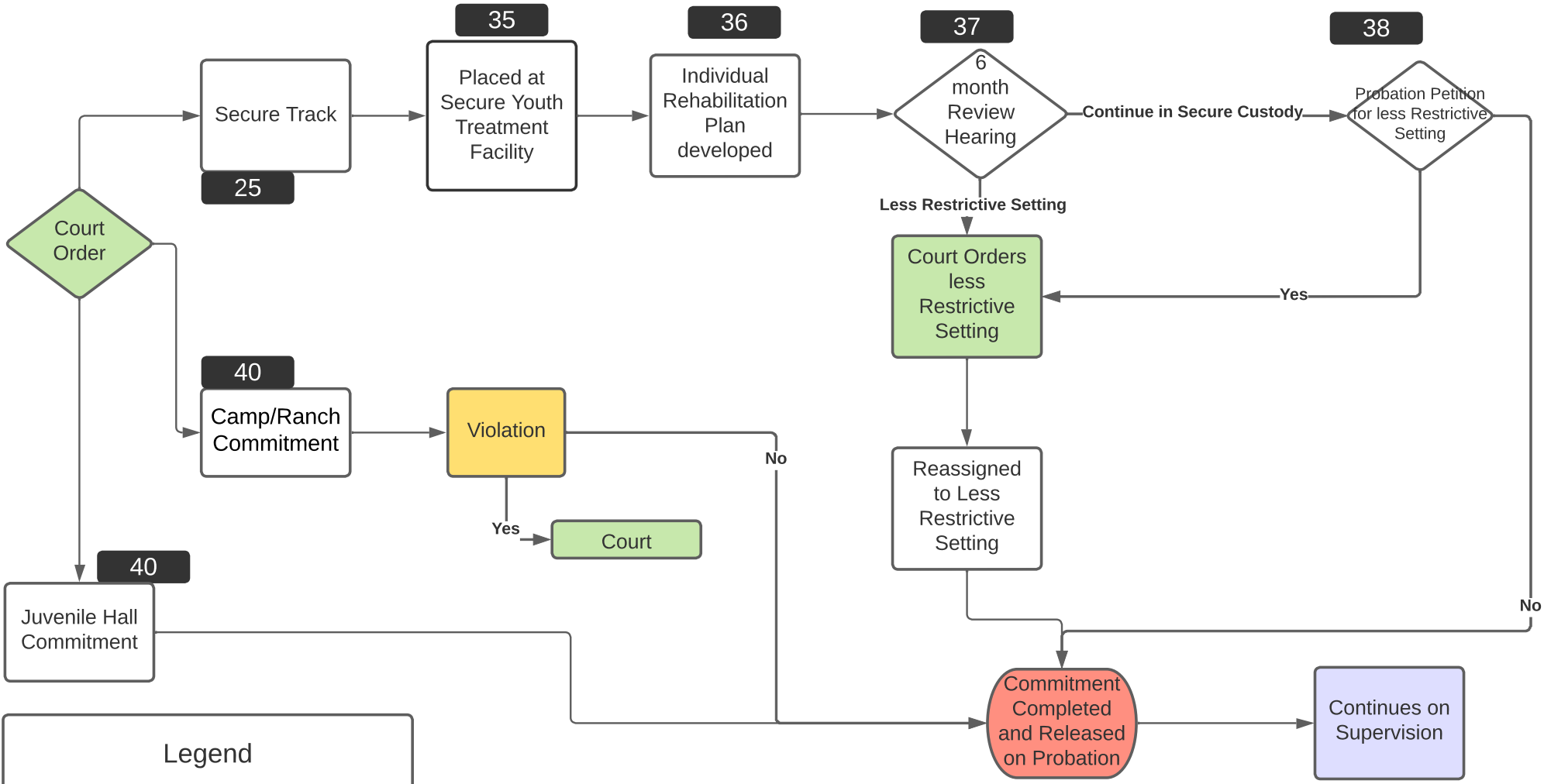
Wardship Supervision



Legend

- Yellow: Key Decision Point
- Green: Process Continues to another page
- Red: Process Stops
- Purple: Link to Deeper Process Map
- Black: Link to Statute

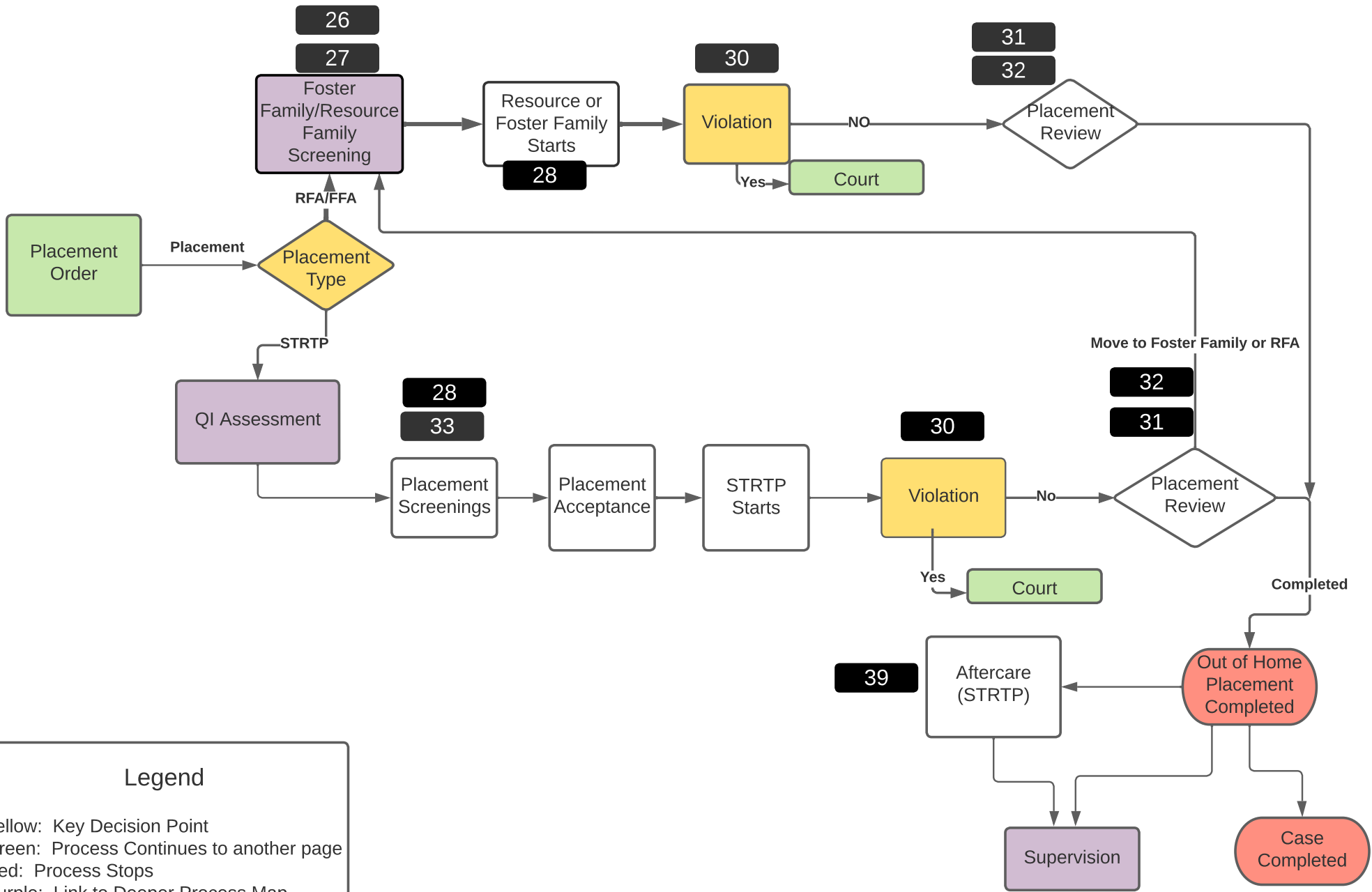
Commitments



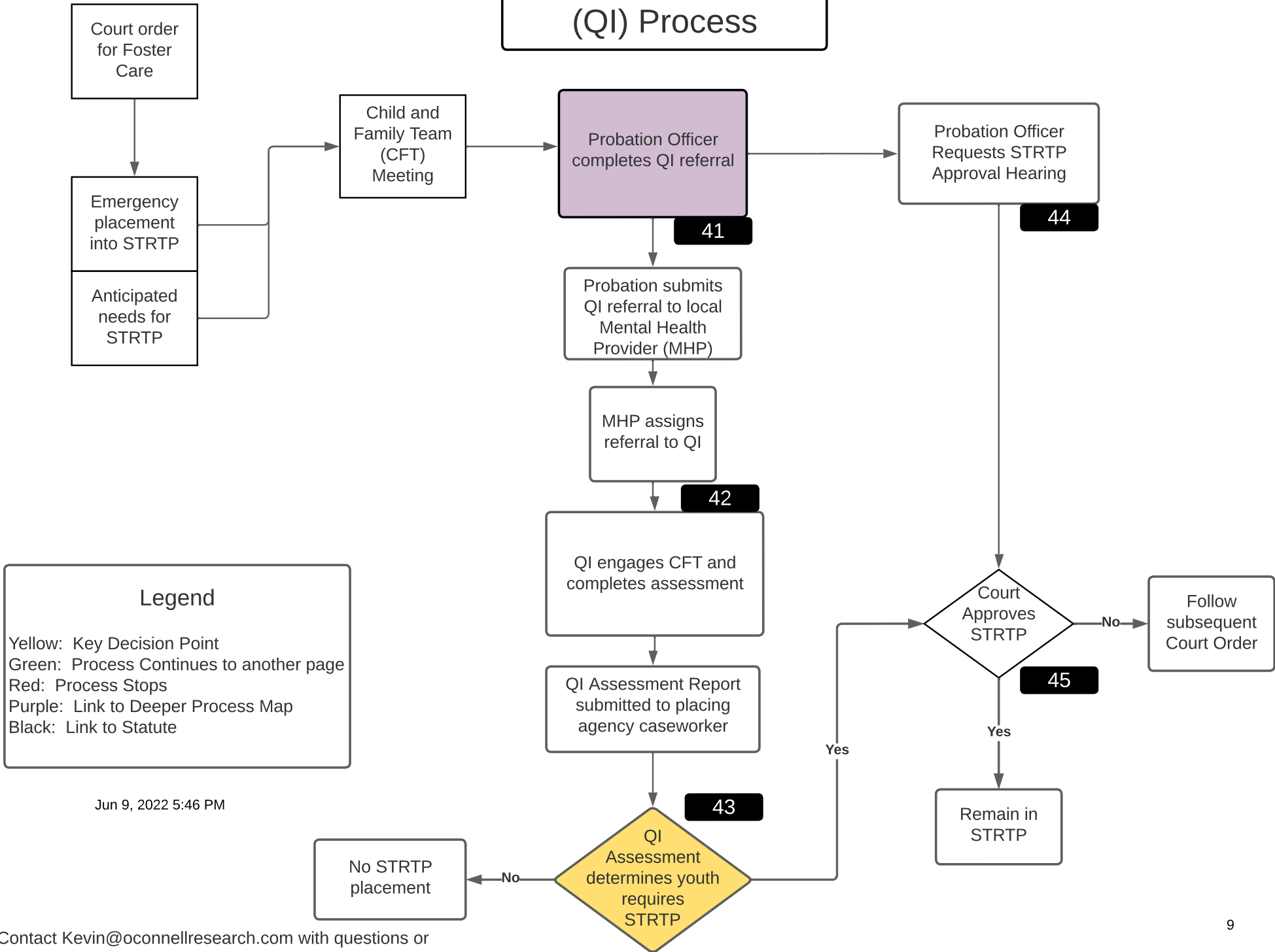
Legend

- Yellow: Key Decision Point
- Green: Process Continues to another page
- Red: Process Stops
- Purple: Link to Deeper Process Map
- Black: Link to Statute

Out of Home Placement



Qualified Individual (QI) Process

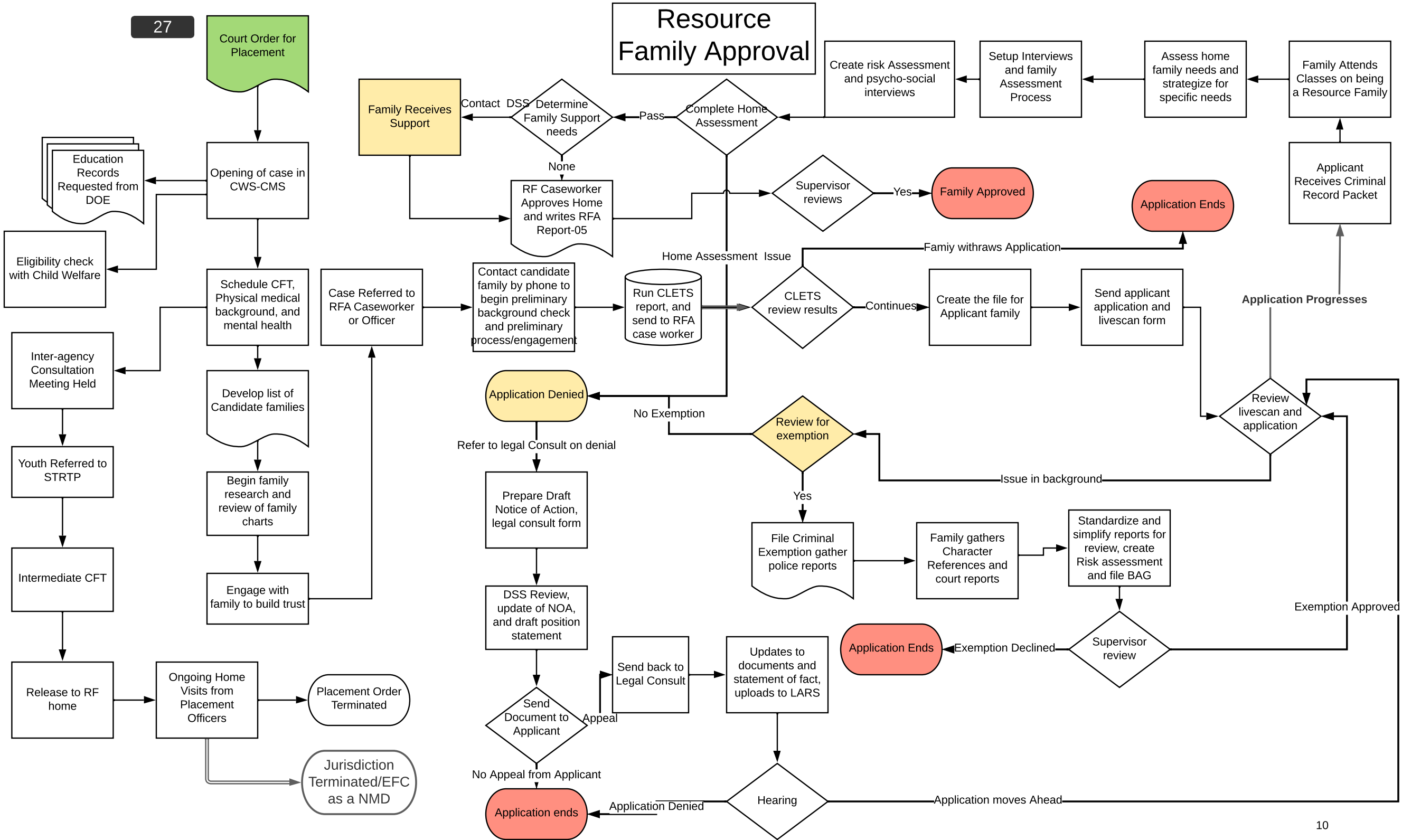


Legend

- Yellow: Key Decision Point
- Green: Process Continues to another page
- Red: Process Stops
- Purple: Link to Deeper Process Map
- Black: Link to Statute

Jun 9, 2022 5:46 PM

Resource Family Approval



Statutes and Timelines

1. Arrest: 625 WIC
2. Out-of-Custody: 626(c) WIC
3. Detention: 626(d) WIC – 24 hours if not a warrant and is a misdemeanor
4. Booking: 626.6 WIC
5. Detention Determination: 628 WIC – 24 hours to decide
6. Home Supervision: 628.1 WIC
7. Informal Program of Supervision: 654 WIC
8. DA Review: 653.1 WIC; 653.5(c) et. seq. WIC - Immediate for 707(b); 48 hours for other specified offenses
9. DA Discretion: 653.5 WIC
10. Probation Discretion: 653.5 (c)(7) WIC; 653.7 WIC;
11. Petition Filed: 656 WIC – Must be filed within 48 hours of being taken into custody
12. Detention Hearing: 632 WIC – Must occur within 24 hours of filing of petition
13. Court Informal Probation: 654.2 WIC – 6 months; ability to continue in 3 month increments
14. Deferred Entry of Judgment: 790-795 WIC – 36 months
15. Pre-Trial/Jurisdictional Hearings: 657 WIC – In-Custody must occur within 15 days of detention order; Out-of-Custody must occur within 30 days of petition filed
16. Findings on Petition: 702 WIC
17. Social Study (PO Investigation): 706 WIC
- xx. Case Plan Requirements: 706.5 WIC, 706.6 (c) WIC, 706.6(e) WIC
19. Inter-agency Placement Committee (IPC): 4096 WIC
20. Wraparound: 18250 et. seq. WIC
21. STRTP Eligibility: 4096(e)(1) WIC
22. Dispositional Hearing: 706 WIC – In-Custody: 10 days; Out-of-Custody: 30 days
23. Wardship: 725(b) WIC, 726 et. seq. WIC, 727 et. seq. WIC, 729 et. seq. WIC
24. Probation without Wardship: 725(a) WIC – 6 months
25. Camp/Ranch Commitment: 880 WIC et. seq.
26. Relative and Non-Relative Extended Family Member: 727(a)(4)(A) WIC, 362.7 WIC
27. RFA Requirements: 16519.5(c)(1) WIC
28. STRTP: 1502.4(a) HS, 11400 WIC
29. Supervised Independent Living Placement (SILP): 11400(w) WIC
30. Violation of Probation (Notice of Hearing): 777 WIC
31. 6-month review hearings: 727.2(c) WIC et. seq.
32. Permanency Planning Hearings: 727.3 WIC et. seq.
33. Child and Family Team Convening: 16501.1(c) WIC
34. Transitional Housing Program Plus 11400(s) WIC
35. Secure Youth Treatment Facility – 875(a) WIC
36. Individual Rehabilitation Plan - 875(d) WIC
37. Secure Youth Treatment Facility Review Hearings – 875(d) WIC
38. Less Restrictive Setting – 875(f) WIC
39. Family Based Aftercare Services -- 4096.6 WIC
40. Commitment to Juvenile Home, Ranch, Camp, or Juvenile Hall: 730(a)(1) WIC
41. Qualified Individual Referral: CDSS ACL 21-113 (Sept 2021)
42. Provision of the Qualified Individual's Assessment Report: 4096(g)(6) WIC
43. Qualified Individual Determinations and Documentation: 4096(g)(4) WIC
44. Request for STRTP Review Hearing: 727.12(b)(1) WIC
45. Court Review of STRTP Placement: 727.12(e) WIC