

# CPOC Foundation CalAIM TRAINING SERIES

**“Bridging Systems - Synthesizing Knowledge - Improving Outcomes”**

# What is CalAIM?

May 12, 13, 14, 2026

# Meet the Trainers



**Brian Richart**

Chief Probation Officer, Retired  
El Dorado County



**Chelsey Chapelle**

Assistant Chief Probation Officer, Retired  
Shasta County



**Scott Coffin**

CalAIM JI Specialist  
Serrano Advisors, LLC

- Understanding CalAIM helps all of us bridge systems, align our work, and improve outcomes for the populations we serve

# Training Objectives

**#1**

**Understand the purpose and structure of CalAIM and the Justice-Involved (JI) Initiative**

**Understand how initiative has changed managed care for JI**



**#2**

**Review of the roles and responsibilities of key system partners**



**#3**

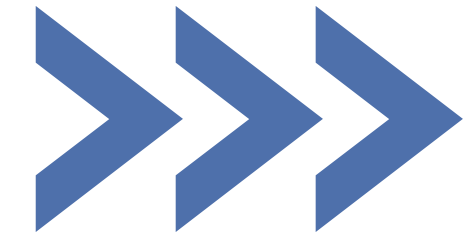
**Identify how Enhanced Care Management (ECM) & Community Supports address whole-person needs**



**#4**

**Outline and apply Medi-Cal enrollment, pre-release services, and reentry coordination process**

# What is CalAIM



- “California Advancing and Innovating Medi-Cal” is a multi-year program to transform the managed health systems of care
- Authorized by Federally-approved 1115 demonstration waivers
- Allows Californians who are incarcerated to enroll in Medi-Cal and receive a targeted set of pre-release services during the last 90 days of custody
- Entry into Enhanced Care Management services is offered to formerly incarcerated individuals 12 months following release from a detention facility

# Why CalAIM was Created

## BEFORE

Disconnected Systems

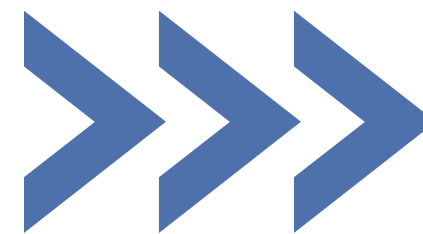
Fragmented Service  
Delivery

Reactive Care

System Focused

Medi-Cal excluded reimbursements  
for pre-release services

Outcomes for Clients



## NOW

Coordinated Care

Preventative Approach

Whole-person Focus,  
Commitment to Equity

Directed Pre-release  
Services with Funding  
through Medi-Cal

Intended Outcomes for  
Clients

# Medi-Cal History

- Re-entry initiative bridges gaps between correctional health and community-based care.
- Ensures individuals entering the community have timely access to critical physical and behavioral health.
- Includes substance use disorder healthcare services, as well as linkages to community-based providers and services before they are released.
- Over 96% of Medi-Cal beneficiaries are enrolled in the managed care program.

# Populations of Focus

	Adults	Children & Youth
Individuals or families experiencing homelessness	X	X
Individuals at risk for avoidable hospital or emergency room visits (high utilizers of multiple systems of care)	X	X
Individuals with serious mental or substance use disorders	X	X
Individuals transitioning from incarceration	X	X
Adults living in the community at risk for long-term care	X	-
Adults in nursing facilities transitioning to the community	X	-
Children & youth enrolled in the California Children's Services program	-	X
Children & youth involved with child welfare services	-	X
Birth equity	X	X



# Justice-Involved Population of Focus

**Individuals transitioning from incarceration (Up to 12 months Post-release)**

**Qualifying conditions for adults**

**Youth**

- Different eligibility rules apply
- Former foster youth

**Whole Person Approach**

# CalAIM

## Objectives & Outcomes

- **Reduce mortality (especially post-release overdose)**
- **Reduce recidivism**
- **Decrease utilization of emergency rooms**
- **Improving health outcomes and quality of life**
- **Improving stability through integrated health & community supports**

# Case Management

## Comprehensive Assessments

Physical health  
Mental health  
Substance use  
Housing  
Food access  
Transportation  
Social determinants and other supports

## Individualized Reentry Care Plan

Person centered and collaborative  
Goal oriented  
Reentry planning services

## Advocacy and Navigation

Reduce barriers  
Connect services  
Social supports

## Reentry Support

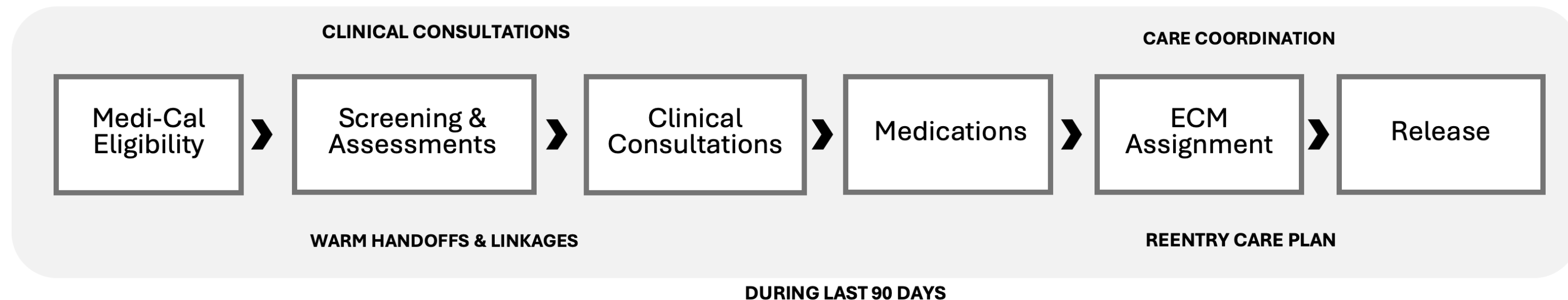
Pre-release planning  
Healthcare linkage  
Social support linkage

## Post-release Linkages & Support

Critical to continuity of care and  
stabilization  
Stabilization support: immediate needs

# What are Pre-release Services?

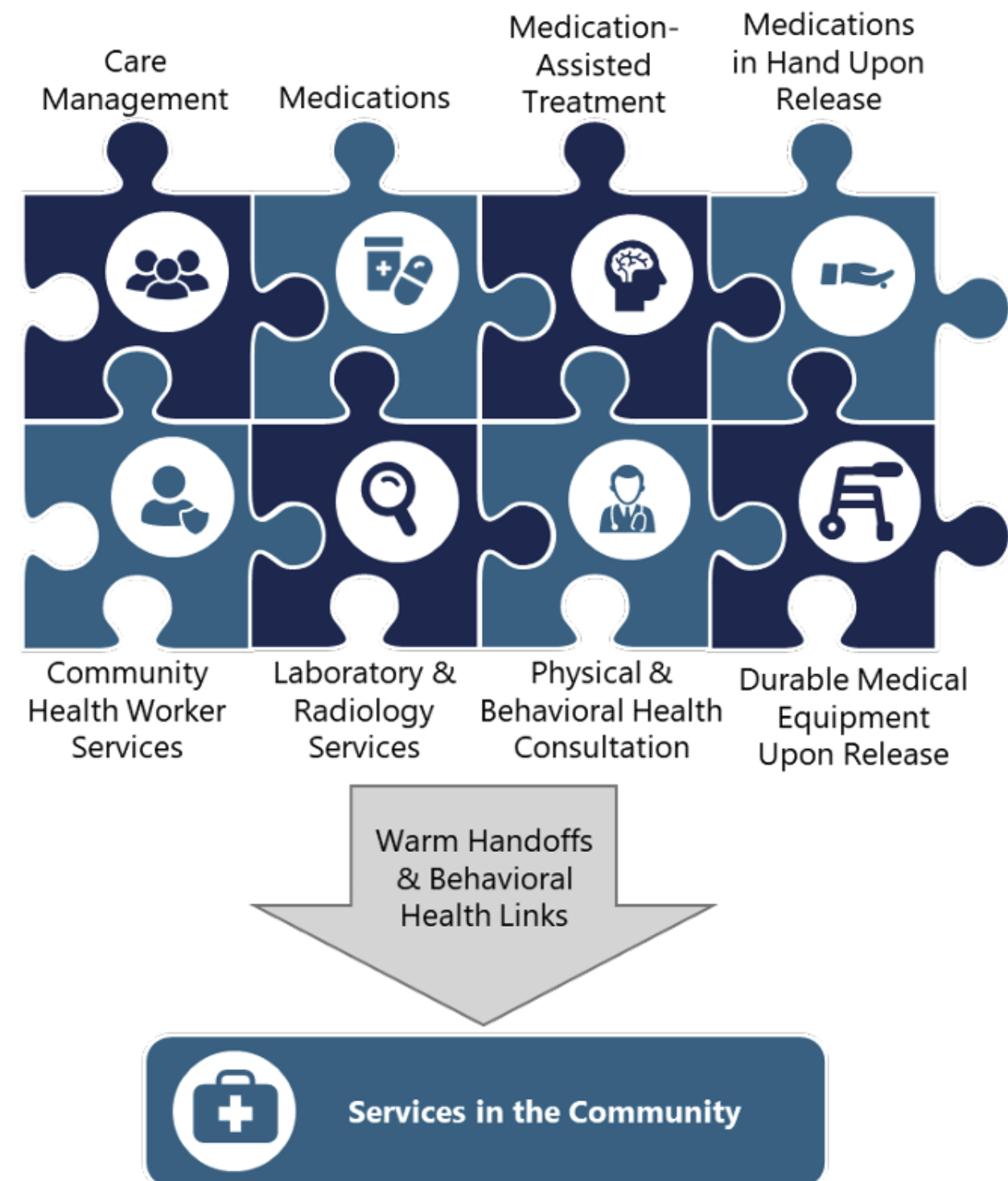
- Screenings
- Assessments
- Clinical Consultations
- Care Coordination
- Warm Handoffs
- Ancillary Services
- Reentry Care Plan
- Linkages & Referrals
- Release Planning & Post-Transition Support
- Medi-Cal Billing
- Monitoring, Oversight, and Reporting
- Medications



# Pre-release Services

- Eligibility
- Clinical Consultations
- Linkages & Warm Handoffs
- Medications
- Ancillary Services
- Care Coordination

## Pre-Release Services Provided to Incarcerated Individuals

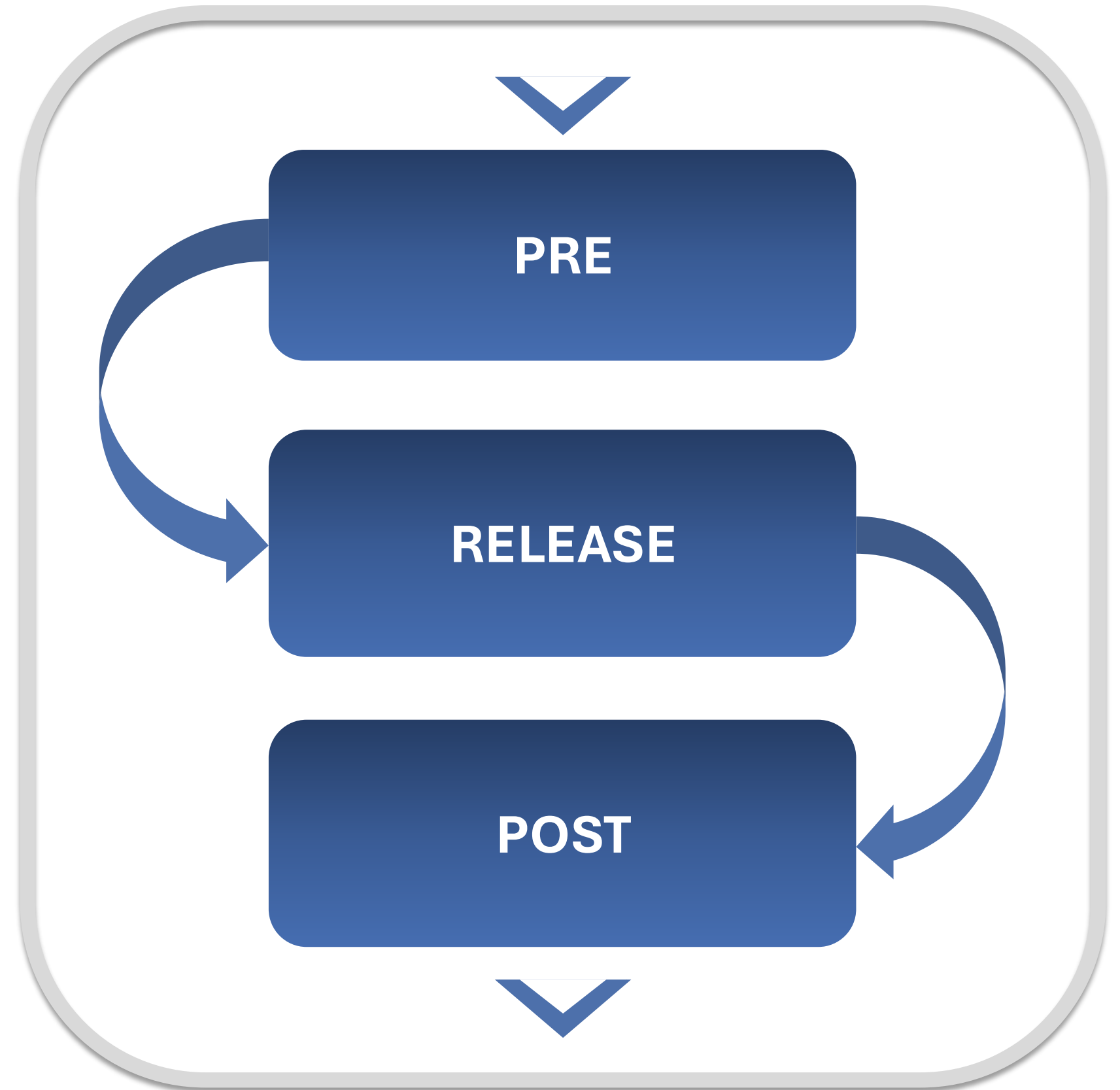


Source: California Department of Health Care Services

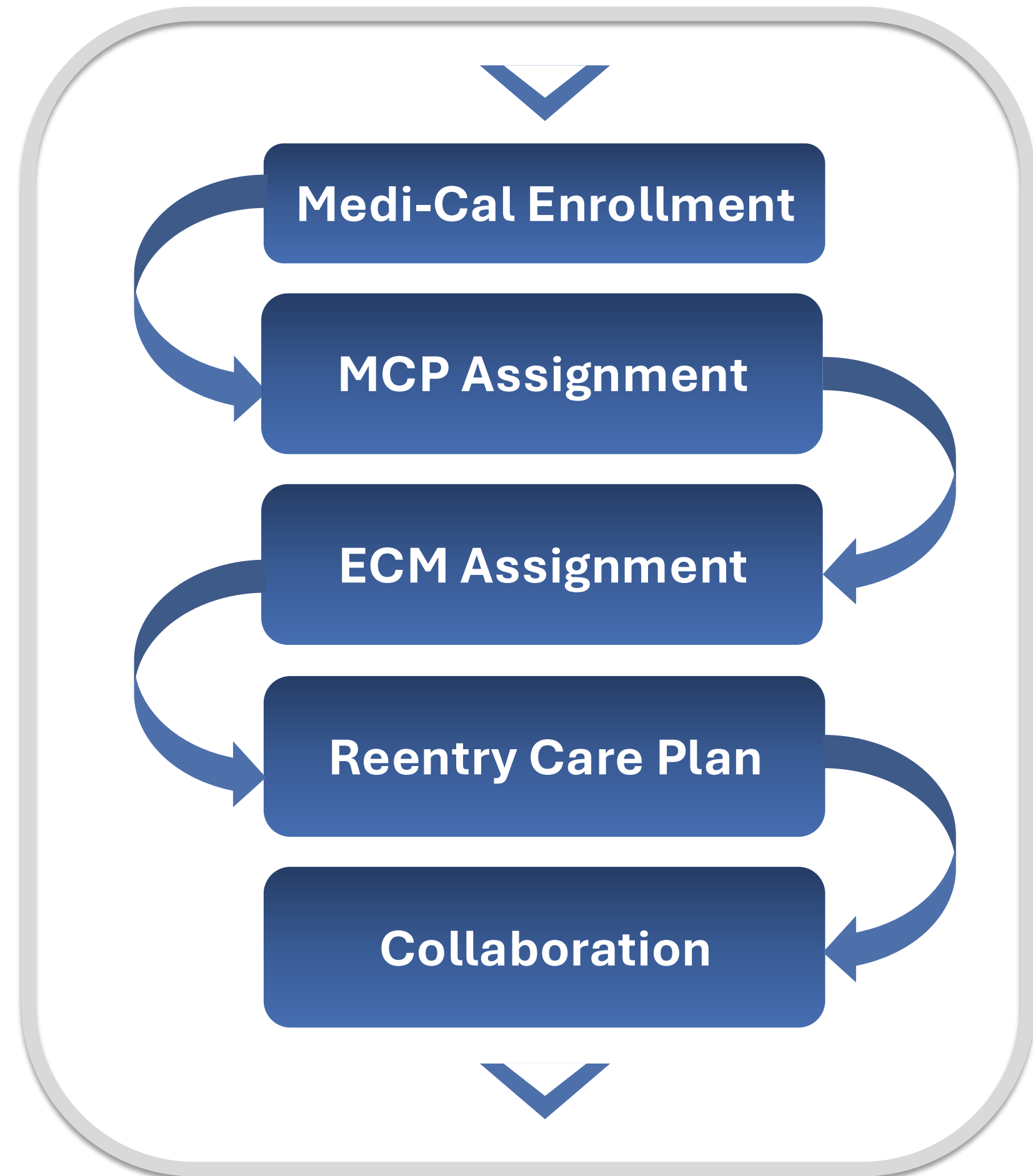
# Reentry Care Planning

## Inside the Facility

- Assessments
- Care Delivery
- Referrals



# Linkages & Warm Handoffs



# Point of Release Actions

- Re-entry Care Plan
- Health-related medical appointments
- Durable medical equipment
- Release medications
- Medi-Cal (unsuspension)
- Linkages and Handoffs

# Community Supports

Optional services for Medi-Cal managed care beneficiaries to address the social determinants of health to improve the quality of life as people return to their community

- Health plans contract with community-based providers for enhanced care management (complex case management), community supports, and transportation.
- Community supports are optional services in the Medi-Cal managed care program that are authorized by the DHCS and administered by the health plans.
- Community supports vary by county, and are not available during the pre-release period, but after the individual reenters the community.

# Community Supports (Full List)

- Asthma remediation
- Community transition services / nursing facility transition to a home
- Day habilitation programs
- Environmental accessibility adaptations (home modifications)
- Housing transition navigation services
- Housing deposits
- Housing tenancy and sustaining services
- Personal care and homemaker services
- Medically-supportive food / meals / medically tailored meals
- Nursing facility transition / diversion to assisted living facilities (RCFE, ARF)
- Recuperative care (medical respite)
- Respite services
- Short-term post-hospitalization housing
- Sobering centers
- Transitional rent

# Examples of Community Supports?

1

Housing navigation and funding  
(i.e., deposits)

2

Transitional rent

3

Medically tailored & medically  
supportive meals

4

Daily living needs

5

Home modifications for  
accessibility

6

Recuperative care

# Key Reentry Partners

## Correctional Staff

- **Communicate release timing**
- **Prepare release materials**
- **Provide information to clients**

## Social Services

- **Eligibility determination**
- **Reinstatement of benefits**
- **Behavioral health**
- **Serious Mental Illness (SMI)**
- **Substance Use Disorder (SUD)**

## Embedded Clinical Staff

- **Linkages**
- **Warm Handoffs**
- **Clinical Consultations**

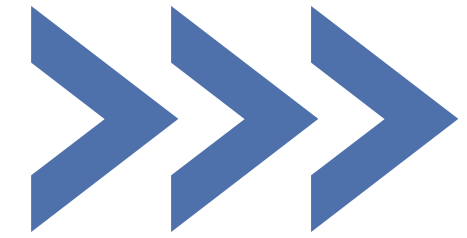
## System Partners

- **MCPs**
- **CBOs**
- **Care managers**
- **Probation**

# System Roles Overview



# What is Enhanced Case Management (ECM)?



- Case management services for individuals with **complex needs**
- Services are delivered by a network of community-based Enhanced Care Management providers
- Medi-Cal managed care health plans are responsible to maintain the provider networks, timely access, and quality of care.
- Enhanced care management services apply to post-release care only and are reimbursed by the Medi-Cal managed care health plans

# Roles of the Medi-Cal Managed Care Plans

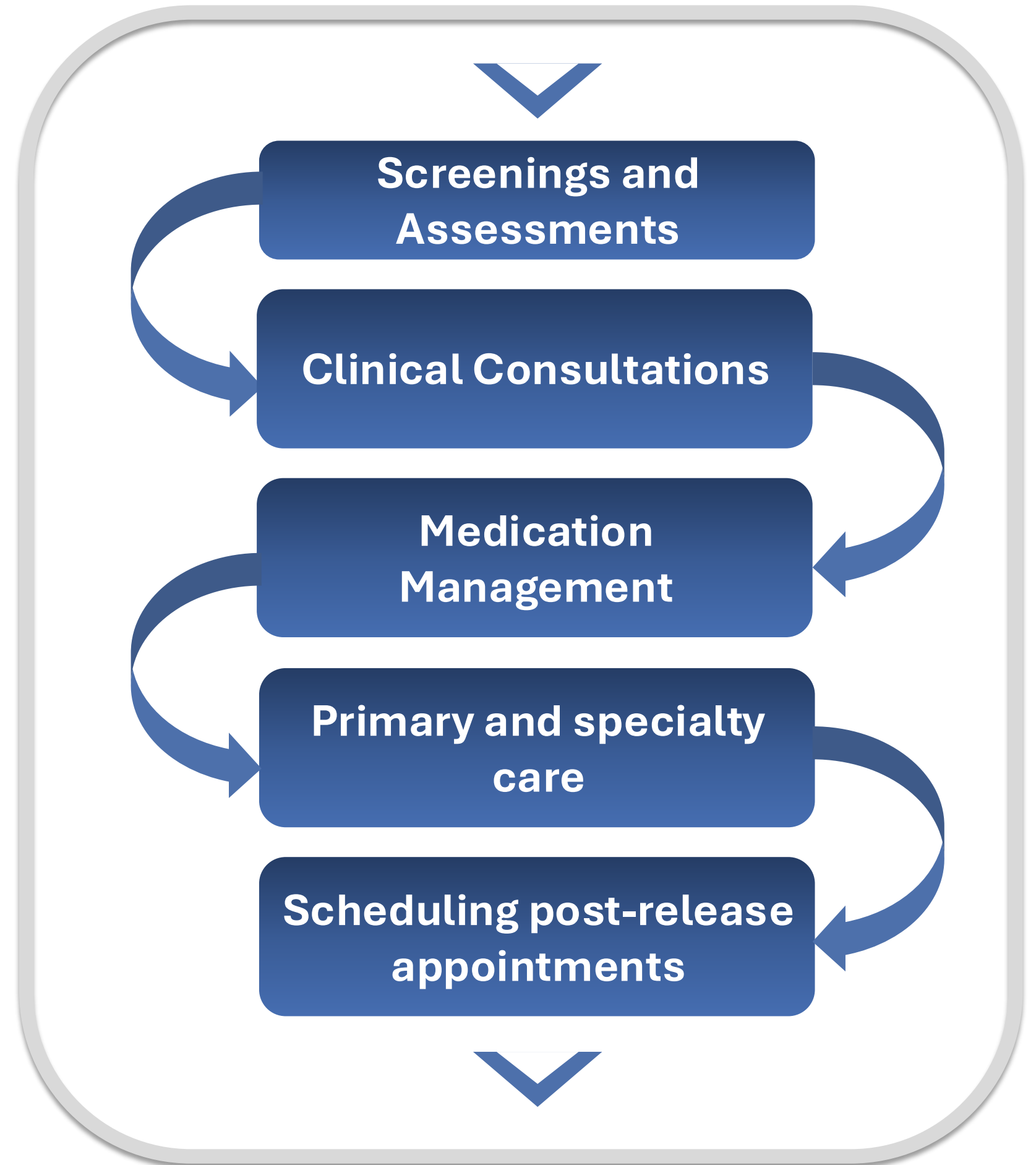
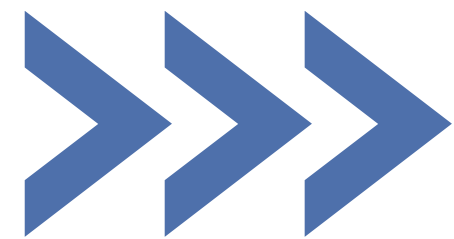
## ➤ Builds and Maintains a Network of Community Based Providers

- Establishes contracts with primary care, specialists, hospitals, clinics, enhanced care management providers, and other community-based organizations
- Monitors quality of service and timely access to care

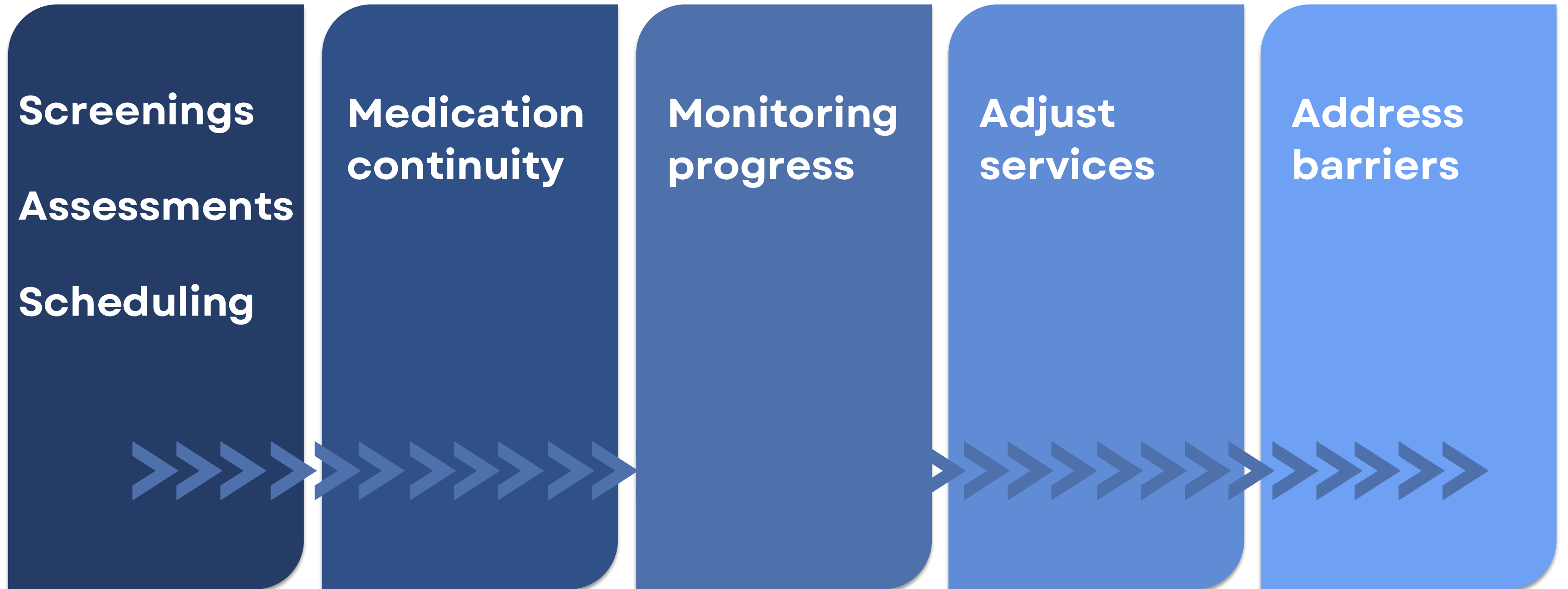
## ➤ Provider Coordination & Administration of Medi-Cal Benefits

- Behavioral Health Agencies administer the specialty mental health and addiction medicine services, and communicate with the Medi-Cal health plans to connect people to services
- Connects individuals to the mild-to-moderate mental health services, and other Medi-Cal covered benefits and services

# Elements of Care Coordination



# What Care Coordination Looks Like



# Who Provides Care Coordination

*CalAIM promotes coordination of care between pre-release and post-release*

## **PRE-RELEASE**

- **Screening, assessment, and treatments are rendered during the last 90 days**
- **Reentry Care Plan is developed**
- **Lead Care Manager coordinates services in the facility and linkages**

## **POST-RELEASE**

- **Medi-Cal Health Plan assigns the individual to the ECM provider**
- **ECM renders care and coordinates with health plan for specialists and other Medi-Cal benefits & services**

# Data Systems

- Correctional agencies access the Justice Involved portal
  - Verify Medi-Cal eligibility status
  - Document the length of stay
- County Social Services accesses MEDS and CalSAWS
  - Enroll, Suspend, Unsuspend, and Redetermine eligibility
- County Behavioral Health Services access MEDS-LITE and other systems to verify a person's eligibility
- Probation case management systems

# Data Sharing and Agreements

## Data Sharing Agreement

**Demographics**

**Contact**

**Treatment History**

**Medications**

**Juvenile State & Federal**

**Laws**

**Privacy**

**Security**

**Data Systems**

## Release of Information

**ASCFMI**

<https://www.dhcs.ca.gov/CalAIM/Pages/ASCFMI-CalAIM.aspx>

## Memorandum of Understanding

**Role of Probation**

**Role of Managed Care Plan**

**Data Sharing & Exchange**

# Why Implementation Varies

County size

Facility infrastructure

Provider networks

Counties without  
detention facilities

Short-term model

## PATH Funding

PATH 1, 2, 3 awarded to build capacity and readiness for pre-release services

DHCS is approving expenditure dates through 2027 to support longer procurement cycles

PATH round 4 awarding in Process

## Facility Readiness

California's system is county-driven – implementation of CalAIM reflects that variability

# Billing and Reporting

## Documentation

- Encounters for pre-release services (i.e. evaluation & management)
- Reviewed and signed by licensed caregivers in the detention facility, following Medi-Cal payment guidelines

## Medi-Cal Billing

- Service codes for screenings, assessments, lab, radiology, medications, durable medical, and other services
- Care Management Bundles
- Diagnosis, evaluation and management

## Revenue Cycles

- Request authorizations for certain services and pharmaceuticals
- Manage payment denials when incorrect codes are applied to the claim, documentation is incomplete, ineligible person, or services are not authorized

## Reporting

- Eligibility screenings, enrollment denials, and new applications
- Most services are reported through service encounters and claims

# CPOC Foundation CalAIM TRAINING SERIES

**“Bridging Systems - Synthesizing Knowledge - Improving Outcomes”**

# **County, State, and Federal CalAIM Requirements**

May 28 & 29 and June 4 & 5, 2026